



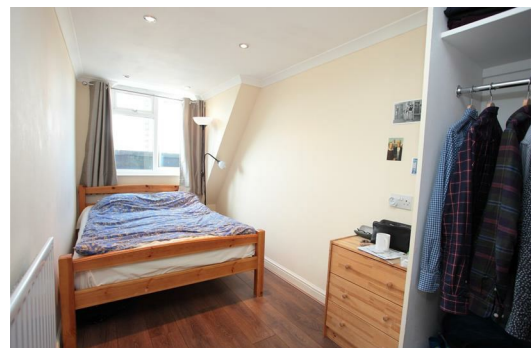
## Voss Street, London, , E2 6HP £2,000 PCM

Elms Estates are pleased to be able offer to the Rental Market this Two Bedroom apartment positioned on the Third Floor.

Voss Street is situated within a short walk of either Bethnal Green (Central Line) Tube Station or Bethnal Green London Overground Station. You are also located just next to Weavers Field Recreation Ground offering open spaces and just behind Bethnal Green Road with all possible local amenities.

Internally the property offers Two Bedrooms a separate Lounge and Kitchen, Double Glazing and Gas Central Heating. An added benefit of this property is the Roof Terrace share with two other apartments.

For more information or to arrange a viewing please do not hesitate to call in and speak with one of our Property Consultants. Early viewing is highly recommended, available to move in to Immediately



Reception

Kitchen

Bedroom One

Bedroom Two

Bathroom

Communal Terrace

Material Information

Deposit: £2,307.69  
Length Of Tenancy: One Year  
Council Tax Band: C

